

Sophos Enterprise Manager comprises a suite of powerful tools to help system administrators manage Sophos Anti-Virus software in any organisation with the minimum of effort.

Enterprise Manager supports the automated distribution and updating of Sophos Anti-Virus from the Sophos databank, a dedicated Sophos website. It manages Sophos Anti-Virus on local desktops and servers, and also provides summary management reports on viruses detected across the organisation.

How it works

Enterprise Manager comprises five components:

Sophos Databank: a website containing the latest versions of Sophos Anti-Virus and virus identity files. It ensures reliable updates by restricting use exclusively to Enterprise Manager users.

EM Library: collects updates from the databank at pre-set times and on-demand. It pushes them out to central installation directories (CIDs) from where desktops and servers can automatically update themselves.

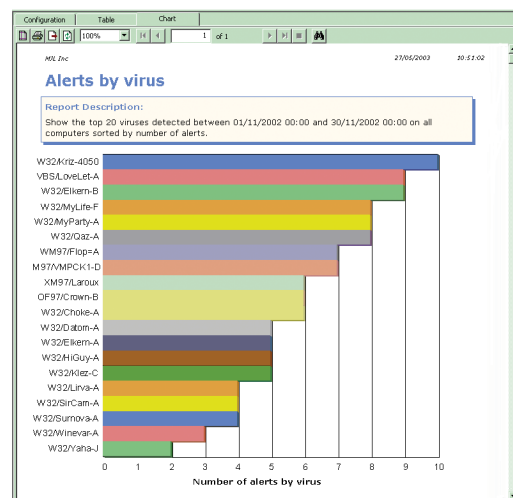
EM Reporter: processes and reports on viruses detected on desktops and servers. It provides four different and highly configurable summary report types which allow management or operational reports to be created quickly and easily.

EM Console: used to configure and manage EM Library and EM Reporter.

SAVAdmin: used to deploy software to all Windows desktops automatically. The software allows real-time monitoring, reporting and control.

Features and benefits

- Offers fast and controllable, automatic and manual distribution of Sophos software enterprise-wide.
- Ensures complete protection to remote users and laptops when Remote Update is installed on them.
- Reduces bandwidth usage by minimising file transfers, sending only new or updated files.
- Supports unattended installation of Sophos Anti-Virus across the network.
- Discovers new computers and installs Sophos Anti-Virus on them automatically.
- Distributes specified Sophos software to servers and desktops on any supported platform in the network.
- Supports hierarchical redistribution of software within the organisation over internet, intranet or WAN.
- Manages large networks by dividing computers into user-defined groups.
- Allows snapshots of networked computers to be stored and recalled.
- Provides a networked "audit" facility for Sophos Anti-Virus with real-time monitoring of all its parameters.
- Allows displayed information to be sorted and filtered.
- Provides graphical and tabular reports on the number of viruses discovered by name, location, time or by individual alerts.
- Allows reports to be filtered and sorted to highlight viruses, computers or SAVAdmin groups of most concern.
- Provides reports suitable for regular management reporting or daily network administration.



EM Reporter can generate a number of reports

Function	Enterprise-wide administration and distribution of Sophos software*.
SAV platforms supported	Windows NT/2000/XP; Windows 95/98/Me.
EM Library	
System requirements	Windows NT 4.0 with SP6a or Windows 2000; Internet Explorer 5 or above. Disk space required: minimum 10MB, recommended 50MB. RAM required: minimum 128MB.
Polling frequency	Up to 24 times a day and on demand.
Library-to-library connection	Via URL or UNC.
CID server support	Windows, NetWare 4+, Samba.
Proxy support	Yes.
EM Reporter	
System requirements	Windows NT 4.0 with SP6a, Windows 2000 with SP2 or Windows XP with SP1; Internet Explorer 5 or above. Single POP3 account. Disk space required: 250MB-2GB**. RAM required: minimum 256MB-512MB**.
Client support	Windows 95/98/Me; Windows NT/2000/XP. Require access to an SMTP account, either directly (NT/2000/XP only) or via a Windows Sophos InterCheck server (all clients).
Database format	SQL Server DE.
Report viewer	Crystal Reports 9, embedded in application.
Report formats	Tabular and graphical.
Available reports	Alerts by virus, per location, by time and by individual incident.
Number of console connections	Maximum: 5.
Report export formats	XLS, DOC, XML, HTML, RTE, CSV and PDF.
Languages supported	English, French, German, Spanish and Japanese.
Multi-lingual client support	Yes (localised as above).
EM Console	
System requirements	Microsoft Management Console 1.2 snap-in; runs on Windows NT/2000/XP. Disk space required: 10MB (includes SAVAdmin). RAM required: minimum 64MB.
SAVAdmin	
System requirements	Windows NT/2000. Installed as part of EM Console.
Supported desktops	Windows 95/98/Me; Windows NT (Intel or Alpha)/2000/XP.
Protocols supported	All Windows-supported protocols, including TCP/IP and NetBEUI.
Browsing modes	Live network browsing – locates machines within active domains. Grouped network view – allowing computers and hierarchies to be logically structured, and providing information for each entry.
Adding machines to group lists	Drag-and-drop and copy-and-paste from the network list; import list from file.
Management capabilities	Real-time monitoring of Sophos Anti-Virus updates; remote installation of SAV; remote configuration of SAV (change CID, change account, alter scan settings, etc); status reporting of SAV.

* Credentials for a 30-day evaluation can be obtained from the Sophos website. Permanent credentials to access the databank are assigned by Sophos when a licence is purchased.

** Varies according to the number of alerts in the database.