

Sophos PureMessage protects organisations from spam, viruses and other email-borne security threats. Combining industry-leading anti-virus and anti-spam technologies with flexible policy management and Sophos’s first-class global support, PureMessage provides comprehensive mail filtering to protect organisations from network downtime, productivity loss and threats to their email infrastructure.

How it works

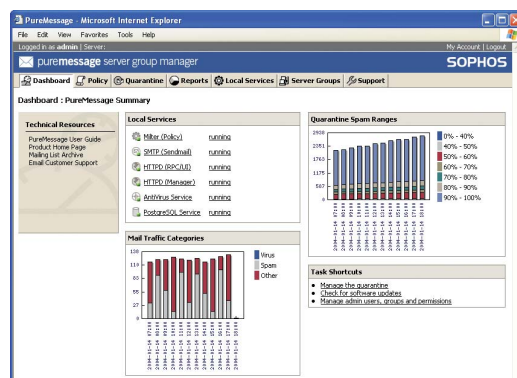
PureMessage interfaces with the email gateway to filter inbound and outbound messages and enforce an organisation’s email policies.

- **Anti-spam:** Leading anti-spam technology, including PureView content scanning, PureDetect message analysis and PureTrace spam operations tracking, ensures ongoing protection from the latest spamming techniques.
- **Anti-virus:** Award-winning anti-virus technology scans all mail at the gateway to protect the entire organisation from email-borne viruses, Trojans and worms.
- **Policy management:** PureMessage’s flexible policy framework enforces inbound and outbound message filtering policies to meet an organisation’s security, communication and regulatory compliance needs.
- **Central administration:** A web-based administrative interface provides flexible control over mail filtering. It enables the configuration and management of filtering policies, the management of quarantined messages, and synchronisation and reporting across multiple servers.
- **End-user control:** Optional, multilingual end-user interfaces provide deployment flexibility through scheduled, email-based, quarantine review and web-based, on-demand access to personal quarantines, whitelists and filtering preferences.

Features and benefits

PureMessage solves the unique email filtering and spam management challenges faced by large organisations.

- Safeguards all email users on the network from current spam and virus threats.
- Protects global organisations against spam and viruses in multiple language message streams.
- Synchronises automatically with daily updates from the Sophos anti-spam and anti-virus labs.
- Detects up to 98% of spam and protects against scams, including “phishing” attacks.
- Stops malicious code at the gateway before it can proliferate within the corporate network.
- Protects against the costs of confidentiality breaches, legal liability and damage to reputation.
- Establishes, monitors and enforces appropriate use, receipt and regulatory compliance policies.
- Provides end-user quarantine review for quick retrieval of legitimate messages through both scheduled email digests and on-demand web access.
- Establishes both enterprise and end-user preferences through global and end-user whitelists and blacklists.
- Integrates with enterprise-class email systems using Sendmail, Postfix MTA (mail transfer agent) or other MTAs via relay.
- Filters millions of messages per day with a scalable message processing and quarantine architecture.
- Includes 24-hour support, 365 days a year.



PureMessage administration dashboard: summary information

PureMessage engine	All messages are intercepted at the email gateway to apply inbound and outbound message-filtering policies based on an RFC 3028-compliant, Sieve-based, policy framework and one or more installed PureMessage modules.
PureMessage Manager	An administrative interface for managing PureMessage servers featuring: <ul style="list-style-type: none"> • Email filtering policy configuration and repository management • Automated quarantine management • Automatic updating • Delegated administration • Multi-server synchronisation and reporting.
Multilingual end-user interfaces	Optional email-based quarantine digests and web-based end-user interfaces enable users to manage their personal quarantine, whitelist, blacklist and filtering preferences.
PureMessage AS anti-spam module (optional)	Proprietary spam protection provides spam identification accuracy through industry-leading research and technology. <ul style="list-style-type: none"> • PureView™ – content scanning cleans up and deconstructs disguised messages, allowing PureMessage to scan the unobfuscated content of the message. • PureDetect™ – message analysis combines multiple, statistically-weighted tests, including such advanced anti-spam techniques as genotype campaign analysis, content and structure heuristics, hashbuster and obfuscation detection, sender authentication, destination URL filtering and DNS blacklist testing. • PureTrace™ – tracks the spammers' moves to protect customers from spam, ensuring the PureDetect tests are up to date with current data on spammer activity, including known spam senders, open proxies, hijacked consumer systems, current spam campaigns and known spam destination websites.
PureMessage AV anti-virus module (optional)	Gateway virus protection simplifies deployment and protects organisations even when individual workstations are not kept up to date. <ul style="list-style-type: none"> • Threat reduction technology blocks existing and new email-aware worms. • Executable content and files in email are automatically checked for malicious code.
PureMessage EP extended policy module (optional)	Extended policy tests broaden the capabilities of PureMessage to enforce security policies with keyword, content, attachment and header-based tests and actions.
Platforms supported	Red Hat Linux on x86 (6.2 to 9.x, Enterprise Server 2.1 to 3). SUSE Linux on x86 (8.0, Enterprise Server 8, 9.0 Professional). Sun Solaris on Sparc (2.6 or higher). HP-UX on PA_RISC1.1 (11.0 or higher). FreeBSD on x86 (4.5 to 4.8). AIX on RISC (4.3.3 or higher).
Gateway/email platforms	Includes Sendmail: supports versions 8.11.6 or higher. Includes Postfix: supports version 2.0.x. Other email platforms: supported via relay configuration.
System requirements	Memory: 1GB minimum. Disk space: 150MB plus quarantine space.

An application form for evaluation software can be obtained from <http://www.sophos.com/products>

fs/040615