

Sophos PureMessage protects organisations from spam, viruses and other email-borne security threats. Combining industry-leading anti-virus and anti-spam technologies with threat reduction technology and Sophos’s first-class global support, PureMessage provides comprehensive mail filtering to protect organisations from network downtime, productivity loss and threats to their email infrastructure.

How it works

PureMessage interfaces with the email gateway to filter inbound and outbound messages and enforce an organisation’s email policies.

Anti-spam: Leading anti-spam technology, including PureView content scanning, PureDetect message analysis and PureTrace spam operations tracking, ensures ongoing protection from the latest spamming techniques.

Anti-virus: Award-winning anti-virus technology scans all mail at the gateway to protect the entire organisation from email-borne viruses, Trojans and worms.

Threat reduction: Allows administrators to block:

- file types by file extension and/or filename.
- Windows and DOS executables, even if the extension has been changed to mask the file’s real identity.
- all messages with a specific subject line.
- all mass mailings sent to more than a specified number of recipients.

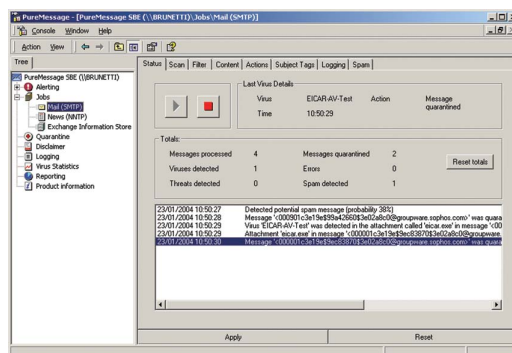
Central administration: PureMessage uses Microsoft Management Console (MMC) to administer all aspects of the product.

End-user control: An optional end-user interface provides deployment flexibility through web-based, on-demand access to personal quarantines.

Features and benefits

PureMessage solves the unique email filtering and spam management challenges faced by large organisations.

- Safeguards all email users on the network from current spam and virus threats.
- Protects global organisations against spam and viruses in multiple language message streams.
- Synchronises automatically with daily updates from the Sophos anti-spam and anti-virus labs.
- Detects up to 98% of spam and protects against scams, including “phishing” attacks.
- Stops malicious code at the gateway before it can proliferate within the corporate network.
- Provides end-user quarantine review for quick retrieval of legitimate messages through email digests.
- Detects polymorphic viruses using Sophos’s advanced Virus Description Language and a built-in code emulator.
- Alerts administrators, senders and intended recipients on receipt of virus infected email.
- Allows remote administration.
- Allows constant automated web-based download of the latest virus updates via Sophos's AutoUpdate technology.
- Integrates with Exchange email server
- Includes 24-hour support, 365 days a year.



PureMessage for Windows/Exchange: mail status

PureMessage Manager	An MMC-based administrative interface for managing PureMessage features: <ul style="list-style-type: none">• Virus scanning and threat reduction features• Spam thresholds and blocking options• PureMessage quarantine• End-user digest configuration and customisation.
End-user interface	Web-based end-user interface enables users to manage their personal quarantine.
PureMessage AS anti-spam module	Proprietary spam protection provides spam identification accuracy through industry-leading research and technology. <ul style="list-style-type: none">• PureView™ – content scanning cleans up and deconstructs disguised messages, allowing PureMessage to scan the unobfuscated content of the message.• PureDetect™ – message analysis combines multiple, statistically-weighted tests, including such advanced anti-spam techniques as genotype campaign analysis, content and structure heuristics, hashbuster and obfuscation detection, sender authentication, destination URL filtering and DNS blacklist testing.• PureTrace™ – tracks the spammers' moves to protect customers from spam, ensuring the PureDetect tests are up to date with current data on spammer activity, including known spam senders, open proxies, hijacked consumer systems, current spam campaigns and known spam destination websites.
PureMessage AV anti-virus module	Gateway virus protection simplifies deployment and protects organisations even when individual workstations are not kept up to date. <ul style="list-style-type: none">• Threat reduction technology blocks existing and new email-aware worms.• Executable content and files in email are automatically checked for malicious code.
Platforms supported	Windows 2000 SP3 (Professional or Server)/2003/XP Professional SP1 (for SMTP components) or Windows 2000 Server SP3 or 2003 Server (for Exchange components). Windows 2000 SP3 (Pro or Server)/2003/XP Professional SP1 for administration console.
Gateway/email platforms	Internet Information Services (SMTP features). Exchange 2000 SP3/Exchange 2003 (Exchange features).
System requirements	Memory: 256MB RAM minimum (512MB recommended). Disk space: 140MB free.

An application form for evaluation software can be obtained from <http://www.sophos.com/products>

fs/040505